

 **Jallatte**®
créateur de bien-être



COLLECTION 2024

MAY EDITION

ENGLISH VERSION

CREDO

For a world more respectful of
people and the environment



A photograph of a stone fountain in a courtyard. The fountain has a large, mushroom-shaped basin on top of a tall, cylindrical column. Water is dripping from the edges of the basin. The fountain is surrounded by a pool of water that reflects the surrounding stone buildings and the fountain itself. The buildings are made of light-colored stone and have several windows. A small sign with the Jallatte logo is visible in the background. An orange banner with the text 'JALLATTE'S DNA' is overlaid on the top left of the image.

JALLATTE'S DNA

Created in 1947 by Pierre Jallatte, the inventor behind the European concept of the **safety shoe** which he had discovered in the United States, ever since it was founded, the Jallatte® company has been located in the Gard municipality of **Saint-Hippolyte-du-Fort**, sheltered in a 17th century fort inspired by Vauban, which became the historical site of Jallatte® four centuries later.

For **75 years**, Jallatte® has established itself as the **leader** on the safety shoe market, by focusing on **innovation and research** into technical performance, in order to guarantee protection for people at work, to keep them healthy and to improve their well-being.

Jallatte® has been able to find a delicate balance between **technology, safety, comfort and design**, by offering **complete ranges** that meet the needs of the harshest environments while confirming the good taste of anyone who wears them.

Today, its design efforts are focused on preventing risks of **DMS** (Musculoskeletal Disorders) thanks to **innovative materials** and **new technologies** in multi-density soles covered by **international patents**.

After safety, comfort and design, Jallatte® is paving the way for **anti-fatigue performance** with an ergonomic approach adapted to all body shapes and working situations.

Jallatte®, creating well-being since 1947



OUR CSR COMMITMENT

► WHAT IS CSR?

The European Commission defines corporate social responsibility (CSR) as a concept whereby companies integrate social and environmental concerns in their business operations and in their interaction with their stakeholders on a voluntary basis.

"A company that adopts CSR therefore seeks to have a positive impact on society while also being economically viable".

Source : economie.gouv.fr, July 2022

For several years, Jallatte has been committed to a world more respectful of people and the environment with its CSR initiative called J-CLEAN.

► WHICH CSR INITIATIVES HAS JALLATTE PUT IN PLACE?

1. The **relocalisation** of part of production to the **historical site** of Saint Hippolyte du fort **in the Gard region**
2. The creation of collections of **safety shoes certified as carbon neutral** by **Bureau Veritas** according to **international standard PAS 2060**, and **made in France**
3. Our commitment to a plan to **reduce our carbon footprint** in the long term certified according to the requirements of standard PAS 2060 (reducing our energy consumption and using green electricity)
4. The development of **local employment** and **expertise**
5. The **maintenance of gender equality** at the company with a score of 87 points out of 100 on the gender pay gap index, which is 12 points above the legal minimum set by the "Professional Future" Law of 5 September 2018 and its implementing decree No 2021-262 of 10 March 2021
6. The adoption of **social benefits** and the development of a **programme for quality of life at work** to improve well-being at work and the company's performance
7. A strategy to **control costs and to manage pricing** helping take profitable market shares and guaranteeing the company's longevity
8. The priority given to **local suppliers and service providers** whenever possible
9. A plan to **reduce our waste** by setting up sorting solutions and a composter
10. The protection of the environment and maintenance of the ecosystem by setting up **bee hives around Jallatte fort**

The solid initiatives we are implementing as part of J-CLEAN make Jallatte a committed and responsible player in a **societal and environmental process** aimed at improving the well-being of our employees and users, while also preserving the planet!

BLUE, WHITE AND RED



ASSEMBLY MADE IN FRANCE

Transparent about designations of origin means we have to communicate clearly and unambiguously for our retail customers and end users.

Too many people on the market hide their manufacturing origins or remain vague, making it impossible to build trust in long-term customer relationships.

Here at Jallatte, our process is clear: we have decided to very clearly indicate any items in our catalogue with a **Blue, White and Red pictogram**, whose **upper and sole assembly is guaranteed to be "Made in France"**.

The others without a pictogram can come from our site in the Cévennes, depending on our manufacturing programmes, or from one of our factories in Tunisia which are 100% integrated and controlled by our Group structure. We should point out that all of our uppers are cut and sewn in these workshops clearly indicated as "UPPER Made In Tunisie", meaning we are not eligible for this declaration.

All these declarations clearly stated in our communication tools and on the regulatory labels of our products are naturally to make Jallatte a **transparent and responsible manufacturer** that wants to develop its customer relationship according to the values of mutual respect and long-term trust.



TRAINERS RANGE

J'respect / 10

J-Energy / 16

J-Hop / 28

Triftane X / 32

Tapis Rouge / 34

J-Industry / 36

J-Nude 2 / 42

Helium / 44

OUTDOOR RANGE

Synergy / 50

J-Escape / 56

Softane Adventure / 60

Softane Avant-Garde / 62

Softane Tradition / 64





CITY RANGE

Softane Prestige / 66

ASSORTED RANGE

Specials / 69

Triftane Excellence / 72

WORK RANGE

J-Pro / 74

MERCHANDISING / 78

TECHNOLOGIES / 80

INDEX / 86

STANDARDS / 89

THE CONCEPT

Being a spokesperson for a world that is **more respectful of people and the environment**, Jallatte has been committed to an extensive CSR plan for several years, called **J-Clean** which involves :

- ▶ Relocating part of the production to the **historic factory in Saint-Hippolyte-du-Fort**
- ▶ Using **local know-how**
- ▶ Adopting a **responsible purchasing policy**



To combat global warming and the natural disasters it causes, the mission set by the United Nations is clear :

- ▶ **TO REDUCE GHG EMISSIONS***
by **45%** by 2030

According to the United Nations, becoming carbon neutral involves 3 concrete actions :

- ▶ Measuring our carbon footprint
- ▶ Reducing this carbon footprint
- ▶ Offsetting what we have not yet been able to reduce

To address the climate emergency and to help **reduce greenhouse gases**, our SME from Gard is confirming its commitment to CSR, known as J-Clean, by creating a **new generation of eco-friendly safety footwear** : J'respect.



With J'respect, our production site based in Saint-Hippolyte-du-Fort has become the first and only factory in France, and in Europe, to manufacture Carbon Neutral-certified safety footwear !

S^T HIPPOLYTE
DU FORT

MEASURE

Nowadays, by analysing the complete life-cycle of our products, we can estimate that a traditional safety shoe accounts for more than 15kg of CO2 per pair.



REDUCE

To take real action and to reduce our carbon footprint, we have launched our J-Clean CSR initiative and created the J'respect collection:



ECO-DESIGNED UPPER

▶ **RECYCLED MATERIALS**
between 50% and 100%



▶ **RAW MATERIALS**
with low CO2 emissions

BIOSOURCED SOLE

CARBON FOOTPRINT REDUCED BY 60%
Compared with conventional PU

100% RENEWABLE MATERIALS
Biomass Balance Polyurethane



Developed in collaboration with BASF, this sole is designed from 100% renewable materials and without any fossil fuels. This is the Biomass Balance approach. The next-gen PU of the J'respect sole is made from recycling and fermenting organic waste.

Our CSR commitments and the creation of the J'respect collection have enabled Jallatte to reduce the CO2 emissions of a pair of safety shoes by an average of 10 to 20Kg, i.e. a carbon footprint reduced by 50% to 65% depending on the model!

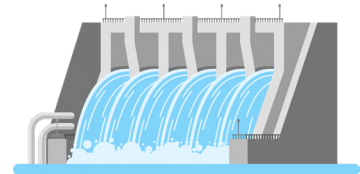


OFFSET

To become carbon neutral, the final pillar of our initiative is offsetting.

Jallatte is committed to this initiative of reducing greenhouse gases by financing, through the United Nations, a project to generate renewable energy in Laos.

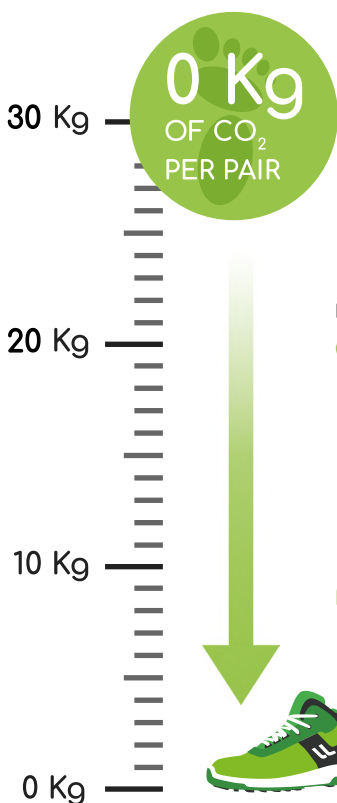
SELF-SUFFICIENCY
In Energy



NOT USING CARBON
For "clean" energy

By financing this project for the environment and society, Jallatte is meeting the sustainable development goals set by the United Nations.

SUSTAINABLE DEVELOPMENT GOALS



Thanks to our J-Clean initiative and to our complete measuring/reducing/offsetting, the J'respect collection can ultimately claim 0 kg of CO2 per pair.



We could not do it without the support and commitment of our partners and customers, all of us together, working for Zero Carbon!



Jallatte

respect



JALVIVO ESD S3 CI SRC

UPPER : Recycled Putek Spider
CODE : JIJ1447



JALECO ESD S3 CI SRC

UPPER : Recycled Putek Spider
CODE : JIJ1434



JALFUTURE ESD S3 CI SRC

UPPER : Recycled microfiber, leather look
CODE : JIJ1414



JALNATURE ESD S3 CI SRC

UPPER : Recycled microfiber, leather look
CODE : JIJ1424



JALO2 ESD S1P CI SRC

UPPER : Recycled microfibre, velvet look
CODE : JIJ1446

- Lining 3D Surf-R mesh
- Toe cap Springtane B
- Insole Maxi Soft Duo
- Anti-puncture insert Flexthane-R
- Sole PU/PU BmB BASF®
- Size 35 - 48





JALBASALT ESD S3 CI SRC

UPPER : Recycled microfibre, nubuck look
CODE : JIJI534



JALONYX ESD S3 CI SRC

UPPER : Recycled microfibre, nubuck look
CODE : JIJI544



JALQUARTZ ESD S2 FO SR

UPPER : Smooth recycled microfiber
ANTI-PUNCTURE INSERT : N/A
CODE : JIJI512



JALGABBRO ESD S2 FO SR

UPPER : Smooth recycled microfiber
ANTI-PUNCTURE INSERT : N/A
CODE : JIJI522



JALOXY ESD S1P CI SRC

UPPER : Recycled microfibre, velvet look
CODE : JIJI556

- Lining 3D Surf-R mesh
- Toe cap Springtane B
- Insole Maxi Soft Duo
- Anti-puncture insert Flextane-R
- Sole PU/PU BmB BASF®
- Size 35 - 48





JALaubier ESD S3 CI SRC

UPPER : Recycled Putek Spider
CODE : JYJY464



JALliber ESD S3 CI SRC

UPPER : Recycled Putek Spider
CODE : JYJY474



JALhydro ESD S3 CI SRC

UPPER : Smooth recycled microfibre
CODE : JYJY484



JALriver ESD S3 CI SRC

UPPER : Smooth recycled microfibre
CODE : JYJY494



Infinergy® anti-fatigue insert by BASF® made from 100% renewable materials and without any fossil fuels.

100% recycled laces. Comes in 2 colours (black & green).
Black laces for a plain look, in green for a colourful look
or in black and green for a quirky look!



- Lining 3D Surf-R mesh
- Toe cap PremAlu B
- Insole Soft
- Anti-puncture insert Flexthane-R
- Sole Infinergy® BmB PU2D/
E-TPU by BASF®
- Size 35 - 48





The SYNERGY collection is fitted with a PU “scuffcap”, which guarantees superior, optimum protection at the front of the foot.

This “scuffcap” allows you to work on your knees without the risk of premature wear and tear of the material on the front of the toe cap.



JALTREE ESD S3 CI SRC

UPPER : Recycled Putek Spider
CODE : JYJY434



JALFOREST ESD S3 CI SRC

UPPER : Recycled microfibre, nubuck look
CODE : JYJY454 SIZE : 38 - 48



JALGROVE ESD S3 CI SRC

UPPER : Recycled microfibre, nubuck look
CODE : JYJY444

- Lining 3D Surf-R mesh
- Toe cap PremAlu B
- Insole Soft
- Anti-puncture insert Flexthane-R
- Sole Infinergy® BmB PU2D/
E-TPU by BASF®
- Size 35 - 48





JALTOUNDRAS ESD S3 CI SRC

UPPER : Recycled Putek Spider
CODE : JVJV207

Lining 3D Surf-R mesh

Toe cap PremAlu B

Insole Soft

Anti-puncture insert Flex-Light-R

Sole PU/PU BmB BASF®

Sizes 35 - 48



UPPER



PU TEK® SPIDER technology uses new, highly abrasion-resistant yarns for greater tenacity and enhanced performance. These highly resistant, water-repellent fabrics enable us to produce ultra-lightweight, ultra-breathable S3 products. PU TEK® is made from **68% recycled polyester**.



Recycled Aseptane microfiber impregnated with resins. This makes it exceptionally waterproof and breathable, as well as easy to clean and maintain. This microfiber is ideal for use in damp environments and against fluid splashes, and is made from **40% recycled polyamide**.



Leather- and nubuck-look microfibers are made from **40% recycled materials**. The velvet-look microfiber is made from **50% recycled materials**.

LINING



Innovative, antibacterial technical lining that combines high performance breathability and abrasion resistance with a soft, comfortable feel. Its special 3-layer structure promotes thermoregulation to keep feet dry and comfortable. This lining is made from **66% recycled material**.

INSOLE



This removable comfort insole is made of 2 materials:

- ▶ A "SOFT" layer of Dynamic **Biomass Balance** polyurethane from BASF® with shape memory, heat-sensitive and active all over the foot.
- ▶ An integrated anti-fatigue "MAXI" size insert in Elastopan Biomass Balance from BASF®, the elastomer used in anti-fatigue mats.



SOFT insole in Dynamic polyurethane from BASF® with **shape memory**, **heat-sensitive** and active all over the foot.

Directly under the soles of the feet, SOFT **improves weight distribution** by cushioning pressure points and providing a **positive energy return**.

ANTI-PUNCTURE INSERT

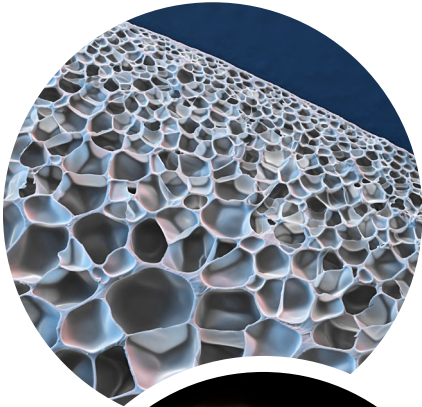


Composite, non-magnetic and athermic anti-perforation insert made from **50% recycled polyester**.



Antipuncture insert in non-woven fabric, 54% lighter than a standard insert, antistatic, sewn directly onto the upper and made from **77% recycled polyester**.

Properties of BASF®'s Infinergy® expanded thermoplastic polyurethane (E-TPU)



- High elasticity to flexibility and lightness
- Flexibility and low density
- High energy return (energy return coefficient over 55%)
- Tensile stress resistant
- Abrasion resistant
- Absorbs very little water
- Resistant to significant temperature variations over time (-20°C to + 40°C)



Infinergy® stores energy so that it can be better released. A confluence of technology that makes for dynamic cushioning. **Soft, dynamic** cushioning that provides unprecedented energy returns.

- Energy is stored as the foot hits the ground.
- And is returned through the sole as the foot lifts up, pushing the foot forward.

Infinergy® has **excellent durability** even with continuous and extended use. Infinergy®, unlike other traditional foams, retains high levels of **flexibility** and **elasticity** without any signs of stiffness, even at low temperatures.





Innovative technology used in running shoes is now available for safety shoes !

BASF
We create chemistry

BASF SE

Infinergy[®]

Made with Infinergy[®] by BASF

Already used with success in running shoes, this **innovative material** improved athletic performances, reducing fatigue.

What if it was the same for safety shoe users ?

For everyone who is exposed to arduous work situations :

- Standing for long periods
- Walking long distances
- Constant kneeling or squatting



J-ENERGY safety footwear

- Returns **more than 55% of the stored energy** while walking
- Save one hour of energy per day
- Reduces feeling of fatigue
- Provides **outstanding comfort** due to the cushioning of the sole
- Absorb plantar pressure zones
- Prevents the risk of developing lower limbs MSDs (musculoskeletal disorders)

According to BVA biomechanical study No. 1095 carried out in 2020 by the CTC, wearing J-ENERGY safety footwear reduces leg muscle activity by 17%. Because of BASF's Infinergy insert, the push-off stage of the foot is more efficient, which reduces the effort required and, therefore, energy expenditure.

Our « Energy » is valuable, let's protect it !

J-ENERGY

These safety sneakers from the J-ENERGY collection feature Vibram® soles for greater durability, slip resistance and abrasion resistance, to keep workers safe and comfortable.





QuickLio™



JALDRAGSTER ESD S3S CI HI HRO FO SR

UPPER : Water-repellent pull-up leather

CODE : JYJY193 SIZE : 35 - 48

JALNITRO ESD S3S CI HI HRO FO SR

UPPER : Water-repellent pull-up leather

CODE : JYJY293 SIZE : 35 - 48

| | |
|----------------------|--|
| Lining | 3D Roma Mesh |
| Toe cap | PremAlu B |
| Insole | Soft+Gel |
| Anti-puncture insert | Flexitone |
| Sole | Triple density with high energy return PU2D/E-TPU Infinergy® from BASF®/ Vibram® |





NEW

JALFLASH ESD S3S CI FO SR

UPPER : Suave nubuck leather

LINING : 3D Surf mesh

CODE : JYJY189 SIZE : 35 - 48



NEW

JALSTAR ESD S3S CI FO SR

UPPER : Suave nubuck leather

LINING : 3D Surf mesh

CODE : JYJY289 SIZE : 35 - 48



NEW

JALBOMBER ESD S3 CI SRC

UPPER : PUTEK STAR

LINING : 3D Surf mesh

CODE : JYJY498 SIZE : 35 - 48



NEW

JALWAVE ESD S3 CI SRC

UPPER : Suave nubuck leather

LINING : 3D Surf mesh

CODE : JYJY499 SIZE : 35 - 48



JALPURE ESD S3 CI SRC ●

UPPER : PUTEK PLUS abrasion-resistant and breathable

LINING : 3D Roma mesh

CODE : JYJY250 SIZE : 35 - 48



ASEPTANE

JALPERFECT ESD S3 CI SRC

UPPER : Breathable and waterproof microfiber

LINING : 3D Roma mesh

CODE : JYJY251 SIZE : 35 - 48

- Toe cap PremAlu B
- Insole Soft + Gel
- Anti-puncture insert Flextone
- Sole Triple density with high energy return PU2D/E-TPU Infinergy® from BASF®



AN ASSERTIVE NEW STYLE :

SPORT & chic



JALPACINO S3 CI SRC

CODE : JYJY500 SIZE : 38 - 48



JALDENIRO S1P SRC

CODE : JYJY501 SIZE : 38 - 48



Infenergy®

Made with Infenergy® by BASF

+55% energy restitution !

- Upper Pure full-grain leather
- Toe cap PremAlu B
- Insole Soft+Gel
- Anti-puncture insert Flexthane
- Sole Triple density with high energy return PU2D/E-TPU Infenergy® from BASF®



LINK-ESD





JALCLIMATE S3 CI WR SRC

UPPER : PUTEK® PLUS highly resistant to abrasion, water resistant and breathable

LINING : GORE-TEX® Membrane

CODE : JYJY137 SIZE : 38 - 48



JALDYNAM ESD S3 CI SRC

LINING : 3D Surf mesh

CODE : JYJY103 SIZE : 35 - 48

JALSPRING ESD S3 CI SRC

LINING : 3D Surf mesh

CODE : JYJY203 SIZE : 35 - 48



JALPULSE ESD S3 CI SRC

LINING : 3D Roma mesh

CODE : JYJY104 SIZE : 38 - 48

JALTONIC ESD S3 CI SRC

LINING : 3D Roma mesh

CODE : JYJY204 SIZE : 38 - 48

- Upper Suave nubuck leatherer
- Toe cap PremAlu B
- Insole Soft + Gel
- Anti-puncture insert Flexthane
- Sole Triple density with high energy return PU2D/E-TPU Infinergy® from BASF®





JALTURBO ESD S3 CI SRC

UPPER : Full grain water resistant leather
CODE : JYJY132 SIZE : 38 - 48



JALGEAR ESD S3 CI SRC

UPPER : Full grain water resistant leather
CODE : JYJY232 SIZE : 38 - 48



JALSOLID ESD S3 CI SRC

UPPER : PUTEK® PLUS highly resistant to abrasion, water resistant and breathable
CODE : JYJY134 SIZE : 38 - 48



JALSKIN ESD S3 CI SRC

UPPER : PUTEK® PLUS highly resistant to abrasion, water resistant and breathable
CODE : JYJY234 SIZE : 38 - 48

| | |
|----------------------|---|
| Lining | 3D Surf mesh |
| Toe cap | PremAlu B |
| Insole | Soft + Gel |
| Anti-puncture insert | Flexthane |
| Sole | Triple density with high energy return PU2D/E-TPU Infinergy® from BASF® |





JALPUNCH ESD S1P CI SRC

UPPER : Smooth suede leather with breathable Nylon fabric inserts

LINING : 3D Surf mesh

CODE : JYJY101 SIZE : 35 - 48



JALPEPS ESD S1P CI SRC

UPPER : Smooth suede leather with breathable Nylon fabric inserts

LINING : 3D Surf mesh

CODE : JYJY201 SIZE : 35 - 48



JALACTIVE ESD S1P CI SRC

UPPER : Perforated suede leather, anti-abrasion textile

LINING : 3D Roma mesh

CODE : JYJY102 SIZE : 38 - 48



JALRUN ESD S1P CI SRC

UPPER : Perforated suede leather, anti-abrasion textile

LINING : 3D Roma mesh

CODE : JYJY202 SIZE : 38 - 48

- Toe cap PremAlu B
- Insole Soft + Gel
- Anti-puncture insert Flexthane
- Sole Triple density with high energy return PU2D/E-TPU Infinergy® from BASF®





JALHYGIE ESD S3 SRC

CODE : JYJY216

SIZE : 35 - 46



JALCARBO ESD S3 SRC

CODE : JYJY217

SIZE : 35 - 46

- Upper Microfiber Aseptane
- Lining 3D Surf mesh
- Toe cap Springtane B
- Insole Soft + Gel
- Anti-puncture insert Flexthane
- Sole Triple density with high energy return PU2D/E-TPU Infinergy® from BASF®



LADIES' COLLECTION



Shoes adapted to women's feet



DOUBLE LACE

For two different looks: sober or fun !



MIKY ESD S3 CI SRC

UPPER : Water resistant leather, Nubuck Finishing

CODE : JYJY109 SIZE : 35 - 42



NOA ESD S3 CI SRC

UPPER : Water resistant leather, Nubuck Finishing

CODE : JYJY209 SIZE : 35 - 42



LAIA ESD S1P CI SRC

UPPER : Smooth suede leather with breathable Nylon fabric inserts

CODE : JYJY212 Size : 35 - 42



INES ESD S1P SRC

UPPER : Textured technical fabric

CODE : JYJY211 SIZE : 35 - 42

- Lining 3D Surf mesh
- Toe cap PremAlu B
- Insole Soft + Gel
- Anti-puncture insert Flexthane
- Sole Triple density with high energy return PU2D/E-TPU Infinergy® from BASF®





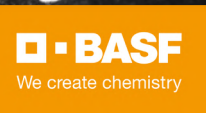
Jallatte

Jallatte

SUPPORT

ESD

J-HOP!



A sole designed with **BASF® PU Extra Rebound 41.5%** guarantees a **constant energy return of over 40%** across its entire surface, both in the stance phase and when pushing off with the foot.

Its particularly soft and supple composition provides **lightness, well-being** and total **comfort**, reducing the sensation of fatigue during walking and sustained activity.



Putek® PLUS Technology uses newly developed **high resistance abrasion** yarns, woven directly into the fabric, to obtain high tenacity and **high-performance** abrasion resistant fabrics. These highly **resistant** and **water-repement** fabrics allow the creation of **ultra-light** and **ultra-breathable** S3 products.



JALHYBRIS ESD S3 CI SRC

CODE : JHJH408 SIZE : 35 - 48



JALMETIS ESD S3 CI SRC

CODE : JHJH308 SIZE : 35 - 48



JALKALLISTO ESD S3 CI SRC

CODE : JHJH409 SIZE : 38 - 48



JALDIDO ESD S3 CI SRC

CODE : JHJH309 SIZE : 38 - 48

Upper PUTEK® PLUS highly resistant to abrasion, water resistant and breathable

Lining 3D Surf mesh

Toe cap PremAlu B

Insole Soft + Gel

Anti-puncture insert Flextone

Sole PU/PU Extra Rebound

PremAlu B SOFT+GEL LINK-ESD



PRODUCTS CERTIFIED ACCORDING TO STANDARD EN ISO 20345





JALURANIA ESD S3 CI SRC

UPPER : Water resistant leather, Nubuck
Finishing

CODE : JHJH407 SIZE : 35 - 48



JALEVA ESD S3 CI SRC

UPPER : Water resistant leather, Nubuck
Finishing

CODE : JHJH307 SIZE : 35 - 48



JALHIPPO ESD S3 CI SRC

UPPER : Full grain water resistant leather

CODE : JHJH406 SIZE : 35 - 48



JALJUNO ESD S3 CI SRC

UPPER : Full grain water resistant leather

CODE : JHJH306 SIZE : 35 - 48

- Lining 3D Surf mesh
- Toe cap PremAlu B
- Insole Soft + Gel
- Anti-puncture insert Flexthane
- Sole PU/PU Extra Rebound





JALTHIA ESD S1P SRC ●

CODE : JHJH402 SIZE : 35 - 48



JALIDA ESD S1P SRC ●

CODE : JHJH302 SIZE : 35 - 48



JALGALLIA ESD S1P SRC ●

CODE : JHJH404 SIZE : 38 - 48



JALADRIA ESD S1P SRC ●

CODE : JHJH304 SIZE : 38 - 48



JALCERES ESD S1P SRC ●

CODE : JHJH301 SIZE : 38 - 48



- Upper Rio suede leather and breathable anti-abrasion textile
- Lining 3D Surf mesh
- Toe cap PremAlu B
- Insole Soft + Gel
- Anti-puncture insert Flexthane
- Sole PU/PU Extra Rebound



TRIFTANEX

The safety sneakers of the TRIFTANE X collection are equipped with a Vibram® sole that guarantees more durability and better resistance to slipping and on hot surfaces to ensure the safety and comfort of workers in the oil & gas sector, but also in industry, maintenance and mechanics.





JALHYRA S3 CI HRO SRC

UPPER : Water resistant leather, Nubuck
Finishing

CODE : JXJX907 SIZE : 35 - 48



JALTEA S3 CI HRO SRC

UPPER : Water resistant leather, Nubuck
Finishing

CODE : JXJX007 SIZE : 35 - 48



JALPOLYXO S3 CI HRO SRC

UPPER : Full grain water resistant
leatherather

CODE : JXJX906 SIZE : 35 - 48



JALINO S3 CI HRO SRC

UPPER : Full grain water resistant
leatherather

CODE : JXJX006 SIZE : 35 - 48



JALARTEMIS S1P HRO SRC

UPPER : Smooth suede leather with breathable
Nylon fabric inserts

CODE : JXJX902 SIZE : 35 - 48



- Lining 3D Surf mesh
- Toe cap PremAlu B
- Insole Soft + Gel
- Anti-puncture insert Flexthane
- Sole Triftane X Vibram®



TAPIS ROUGE

This triple-density insole, made from a revolutionary elastomer used in the manufacture of anti-fatigue mats, **distributes sole pressure** ; It can **absorb** and **reduce stress on the body** reducing traumas associated with static, prolonged working positions.

High performance in terms of **comfort**, **balance** and **shock distribution**.





JALTURBO-TR ESD S3 CI SRC ●

UPPER : Full grain water resistant leather

LINING : 3D Surf mesh

CODE : JTJT805

SIZE : 35 - 48



JALGEAR-TR ESD S3 CI SRC ●

UPPER : Full grain water resistant leather

LINING : 3D Surf mesh

CODE : JTJT705

SIZE : 35 - 48



JALPULSE-TR ESD S3 CI SRC

UPPER : Nubuck leather, anti-abrasion water-repellent textile

LINING : 3D Roma mesh

CODE : JTJT803

SIZE : 38 - 48



JALTONIC-TR ESD S3 CI SRC

UPPER : Nubuck leather, anti-abrasion water-repellent textile

LINING : 3D Roma mesh

CODE : JTJT703

SIZE : 38 - 48



JALRUN-TR ESD S1P SRC ●

UPPER : Smooth perforated suede leather

LINING : 3D Roma mesh

CODE : JTJT701

SIZE : 38 - 48



- Toe cap PremAlu B
- Insole Soft + Gel
- Anti-puncture insert Flexthane
- Sole Triple density with plantar pressure distribution PU2D/ Elastopan® from BASF®





J-INDUSTRY^{4.0}

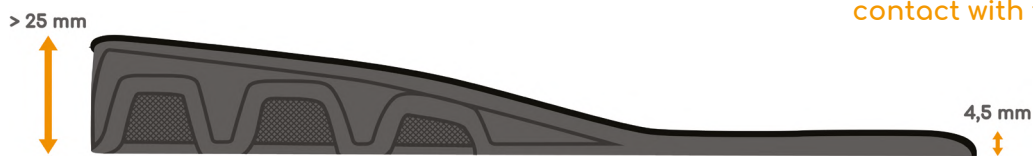
EXTENDED STANDING HEALTH SOLUTION



All-round versatility that reduces tiredness and fatigue in all situations.

MAXI-Soft Duo™ is an entirely innovative insole concept, designed especially for people who have to stand for many hours a day.

It combines an insole with a comfort layer, directly in contact with the sole of the foot



MAXI-Soft Duo™ balances posture and provides an undeniable feeling of comfort, due to two associated technologies, which the user perceives directly at their workstation.

Its elastic deformation properties permits the insole to provide both progressive and prolonged cushioning throughout the step or while walking and a return of energy during the pressure stage on the foot for a guaranteed anti-fatigue effect.



The removable comfort insole is made of 2 materials :

- +

A 'SOFT' BASF® dynamic polyurethane layer including memory foam, which is heat-sensitive and active over the entire surface of the foot.

Under the soles of the feet, SOFT improves weight distribution by reducing pressure points and the feeling of discomfort.
- +

An integrated 'MAXI'-size anti-fatigue insert made of BASF® Elastopan, an elastomer that is used in anti-fatigue mats. Positioned beneath the base layer, this MAXI insert cushions and alleviates stress on the body, which is forced to stand upright for many hours a day, both while in motion and while walking, thus reducing the risk of MSDs (musculoskeletal disorders) in the lower limbs.



JALPYTHON ESD S3 CI SRC

CODE : JIJ1244 SIZE : 35 - 48

BOA® Fit System is a rapid, easy and accurate lacing system with no need for laces. **Eliminates the risk of fall** and untying laces

**Safety, comfort, speed
= preserved health !**



JALTECHNO ESD S3 CI SRC

CODE : JIJ1124 SIZE : 35 - 48

JALNANO ESD S3 CI SRC

CODE : JIJ1224 SIZE : 35 - 48



JALPROCESS ESD S3 CI HI SRC

UPPER : Full grain water resistant leather
CODE : JIJ1114 SIZE : 35 - 48

JALCYBER ESD S3 CI HI SRC

UPPER : Full grain water resistant leather
CODE : JIJ1214 SIZE : 35 - 48

- Upper PUTEK® PLUS water resistant
- Lining 3D Surf mesh
- Toe cap Springtane B
- Insole Maxi Soft Duo
- Anti-puncture insert Flexthane
- Sole PU/PU





JALELEC ESD S1P CI HI SRC

CODE : JIJ1156 SIZE : 35 - 48



JALMECA ESD S1P CI HI SRC

CODE : JIJ1256 SIZE : 35 - 48



JALCLOUD ESD S1P CI SRC

CODE : JIJ1134 SIZE : 35 - 48



JALDATA ESD S1P CI SRC

CODE : JIJ1234 SIZE : 35 - 48



JALKANBAN ESD S1P CI SRC

CODE : JIJ1166 SIZE : 35 - 48



JALLEAN ESD S1P CI SRC

CODE : JIJ1266 SIZE : 35 - 48

- Upper Smooth suede leather
- Lining 3D Surf mesh
- Toe cap Springtane B
- Insole Maxi Soft Duo
- Anti-puncture insert Flexthane
- Sole PU/PU



ASEPTANE



Aseptane is a resin-soaked microfibre that has many properties:

- + Exceptional waterproofing and breathability
- + Easy to clean and look after
- + Ideal for use in wet and splash-prone environments



JALCALCIUM ESD S2 SRC

CODE : JIJ1282

SIZE : 35 - 48



JALGRAPHITE ESD S2 SRC

CODE : JIJ1272

SIZE : 35 - 48

| | |
|---------|---------------|
| Upper | Aseptane |
| Lining | 3D Surf mesh |
| Toe cap | Springtane B |
| Insole | Maxi Soft Duo |
| Sole | PU/PU |



QuickLio™



QuickLio™ 2 en 1" technical lace loop keeps laces in place for quick lacing and untieability.



JALBUMPER ESD S3 CI SRC

SOLE : PU/PU

CODE : JIJI174

SIZE : 35 - 48



JALTRAILER ESD S3 CI SRC

SOLE : PU/PU

CODE : JIJI184

SIZE : 35 - 48



JALROADSTER S3 CI HI HRO SRC

SOLE : PU/VIBRAM

CODE : JIJI194

SIZE : 35 - 48



JALTRUCK ESD S3 CI SRC

SOLE : PU/PU

CODE : JIJI284

SIZE : 35 - 48

- Upper Full-grain leather with Pull-up finish
- Lining 3D Surf mesh
- Toe cap Springtane B
- Insole Maxi Soft Duo
- Anti-puncture insert Flexthane





J-NUDE 2, better slip resistance and greater flexibility, but still featuring that unparalleled “barefoot” feeling and legendary breathability which made J-NUDE a success.



#UPPER
FRAME

JALKOHA ESD S3 SRC ●

CODE : 00JNI28 SIZE : 35 - 47



#UPPER
FRAME

JALDOJO ESD S3 SRC

CODE : 00JNI01 SIZE : 35 - 47



#UPPER
FRAME

JALREI ESD S3 SRC

CODE : 00JNI29 SIZE : 35 - 47



#UPPER
FRAME

JALTAI ESD S3 SRC

CODE : 00JNI03 SIZE : 35 - 47

- Upper Water-repellent full-grain eather with a pull-up finish and a TPU grid reinforcement
- Lining 3D Surf mesh
- Toe cap Springtane B
- Insole Soft + Gel
- Anti-puncture insert Flexthane
- Sole J-NUDE 2 PU/PU



SOFT+GEL



LINK-ESD





JALJAB ESD S3 SRC

UPPER : Water-repellent full-grain leather and fabric

CODE : 00JN119 SIZE : 35 - 47



JALCROSS ESD S3 SRC

UPPER : Water-repellent full-grain leather and fabric

CODE : 00JN120 SIZE : 35 - 47



JALATHLON ESD S3 SRC ●

UPPER : Water-repellent full-grain leather and fabric

CODE : 00JN107 SIZE : 35 - 47



JALCATCH ESD S1P SRC ●

UPPER : Synthetic nubuck with a breathable fabric insert

CODE : 00JN126 SIZE : 35 - 47

- Lining 3D Surf mesh
- Toe cap Springtane B
- Insole Soft + Gel
- Anti-puncture insert Flextane
- Sole J-NUDE 2 PU/PU



HELIUM

Lightness is an essential component of **comfort**. Thanks to new, ultra-light materials that maintain excellent technical performance, the **HELIUM** collection succeeds in guaranteeing the best "durability/weight" ratio, by reconciling workstation **resistance** with an **unrivalled feeling of lightness**.

Models in the **HELIUM** collection are **ideal for use in less demanding environments**, in transport, logistics, light industry, construction, retail and services.



UPPER



PU TEK® STAR technology uses new, highly abrasion-resistant yarns, for greater tenacity and enhanced performance, above and beyond normative requirements. These highly resistant, water-repellent fabrics enable us to produce ultra-lightweight, ultra-breathable S3 products.



Light microfiber with waterproofing and breathability performances comparable to standard leathers.



Highly abrasion-resistant, ultra-breathable CANVAS fabric for extended wear and optimum foot comfort.

INSOLE



SOFT Light insole made of ultra-light expanded polymer, placed directly under the soles of the feet, SOFT Light improves weight distribution by cushioning pressure points and providing a positive energy return.

ANTI-PUNCTURE INSERT



Composite anti-puncture insert made of non-woven fabric 54% lighter than a standard anti-puncture insert, compliant with standard 22568-4:2021, antistatic, sewn directly onto the upper and covering 100% of the foot for all-round protection. This insert is made from 77% recycled polyester.



JALPATRIOT ESD S3 CI SRC

CODE : JVJV103 SIZE : 35 - 48



JALNATION ESD S3 CI SRC

CODE : JVJV203 SIZE : 35 - 48



JALSPACE ESD S3 CI SRC

CODE : JVJV101 SIZE : 35 - 48



JALAERO ESD S3 CI SRC

CODE : JVJV201 SIZE : 35 - 48



JALSTRATO ESD S3 CI SRC

CODE : JVJV206 SIZE : 35 - 48



JALTOUNDRA ESD S3 CI SRC

UPPER : Putek Spider recyclé

CODE : JVJV207 SIZE : 35 - 48

- Upper Putek® STAR Light
- Lining 3D Surf mesh
- Toe cap PremAlu B
- Insole Soft Light
- Anti-puncture insert Flex-Light-R
- Sole PU Light of BASF®



NEW

ASSEMBLY
MADE IN
FRANCE

HELIUM
2



JALTAIL ESD S3 CI SRC

UPPER : Microfibre Light respirante
CODE : JVJV102 SIZE : 35 - 48



JALWING ESD S3 CI SRC

UPPER : Microfibre Light respirante
CODE : JVJV202 SIZE : 35 - 48



JALLADY ESD S3 CI SRC

UPPER : Microfibre Light respirante
CODE : JVJV204 SIZE : 35 - 42



JALPLUME ESD S1P CI SRC

UPPER : Textile Light respirant
CODE : JVJV205 SIZE : 35 - 48



- Lining 3D Surf mesh
- Toe cap PremAlu B
- Insole Soft Light
- Anti-puncture insert Flex-Light-R
- Sole PU Light of BASF®



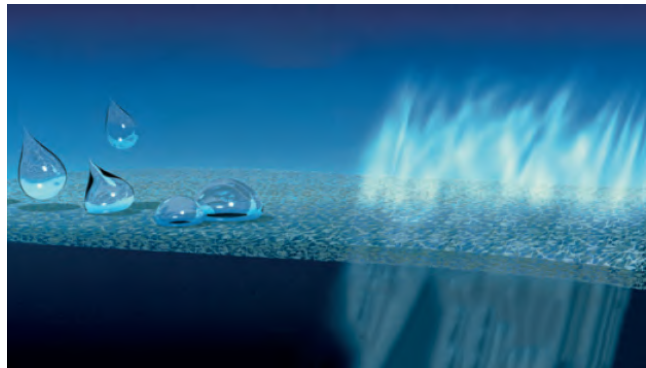


PROTECTION & COMFORT

The GORE-TEX® membrane – the hidden secret at the core of GORE-TEX® Footwear offers high climate comfort in all working weather conditions.

Water stays out while sweat escapes.

GORE-TEX® footwear keep your feet dry and comfortable.



To meet the specific requirements of climate, professional environment, activity level and end use, Gore has special laminates.

Jallatte has chosen Comfort & Performance laminate :

- Durable waterproof
- Breathable
- Moderate thermal insulation for a wide range of temperatures.

Ideal for changing weather and wide range of activities.

PROVEN QUALITY UNDER UNCOMPROMISING TESTING CONDITIONS



WATERPROOFNESS

GORE-TEX® Footwear has to withstand up to 300,000 flex movements (80 hours) in anklehigh water – without allowing one single drop of water to penetrate inside the boot. EN ISO standard 20344 requires only 4800 flexes (80 minutes) and 3 cm² water entry is allowed.



BREATHABILITY

The materials used in GORE-TEX® Footwear achieve a breathability value up to six times higher than the values specified in EN ISO standard 20345/47.



DURABILITY

Inner lining and upper materials of GORE-TEX® Footwear have to withstand up to four times more abrasion movement than specified in by the EN ISO standard.



JALGAND p51
SYNERGY



JALSIBERIEN p56
J-ESCAPE



JALROCHE p56
J-ESCAPE



JALCLIMATE p22
J-ENERGY



JALACER p56
J-ESCAPE



JALPOLE p62
Softane
— Avant-Garde



JALTERRE p56
J-ESCAPE



JALTEX p60
Softane
— Adventure



JALTERRE METAL FREE p56
J-ESCAPE

GORE-TEX® footwear far exceeds the requirements of EN ISO 20345 for
waterproofness, breathability and durability.



The first OUTDOOR energy-saving collection

Codeveloped collection by, and for major players in, the construction, rail transport, cleaning and energy sectors.

The « **SYNERGY** » line is a perfect union between a profile cleat system for outside use and a sole capable of releasing energy.



SYNERGY styles feature a sole with BASF's Infinergy® technology that **returns over 55% of the energy stored** while walking. All this for exceptional **cushioning** and a guaranteed **antifatigue** effect.





The SYNERGY collection is evolving thanks to the PU “scuffcap”, which guarantees superior, optimal protection at the front of the foot. This “scuffcap” allows you to work on your knees without the risk of premature wear and tear of the material on the front of the toe cap.



JALGAND S3 CI WR SRC

UPPER : Full grain water resistant leather finition PULL-UP

LINING : Membrane GORE-TEX®

CODE : JYJY231 SIZE : 38 - 47



JALVISTA S3 CI WR SRC ●

UPPER : PUTEK® PLUS highly resistant to abrasion, water resistant and breathable

LINING : Membrane GORE-TEX®

CODE : JYJY253 SIZE : 38 - 47



JALNORA ESD S3 CI SRC

UPPER : PUTEK® PLUS highly resistant to abrasion, water resistant and breathable

LINING : 3D Surf mesh

CODE : JYJY252 SIZE : 38 - 47

Toe cap PremAlu B

Insole Soft

Anti-puncture insert Flexthane

Sole Triple density with high energy return PU2D/E-TPU Infinergy® from BASF®





JALANGO ESD S3 CI SRC

CODE : JYJY497 SIZE : 38 - 48

BOA® Fit System lets you quickly put on and take off the safety shoes. Traditional laces are replaced with a stainless steel wire connected to a mechanical knob that lets you fasten, lock and unfasten the wire.



This lace-free fastening system prevents the risk of falling and eliminates compression points



JALALTA ESD S3 CI SRC

CODE : JYJY495 SIZE : 35 - 48



JALTANO ESD S3 CI SRC

CODE : JYJY496 SIZE : 35 - 48



QuickLio™ 2 en 1" technical lace loop keeps laces in place for quick lacing and untieability.

- Upper Full-grain leather with Pull-up finish
- Lining 3D Surf mesh
- Toe cap PremAlu B
- Insole Soft
- Anti-puncture insert Flexthane
- Sole Triple density with high energy return PU2D/E-TPU
Infinergy® from BASF®





**ANKLE
PROTECTOR**



JALTARAK S3 CI HI AN SRC

CODE : JY226

SIZE : 35 - 48



JALMUDO S3 CI SRC

CODE : JYJY223

SIZE : 38 - 47



JALFARO S3 CI SRC

LINING : Isotermal

CODE : JYJY224

SIZE : 38 - 47



JALBARAD S3 CI HI SRC

CODE : JYJY222

SIZE : 38 - 47



JALDAGOR S3 CI SRC

CODE : JYJY225

SIZE : 38 - 47

- Upper Full-grain leather with Pull-up finish
- Lining 3D Surf mesh
- Toe cap PremAlu B
- Insole Soft
- Anti-puncture insert Stainless steel
- Sole Triple density with high energy return
PU2D/E-TPU Infinergy® from BASF®



MORE SECURITY, FOR MORE SERENITY, AT ALL TIMES

Vibram® is the world leader in the technological development and manufacture of high-performance rubber soles, for the outdoor, work safety, lifestyle, orthopaedic and repair markets. For more than 80 years, the unmistakable yellow octagon has been the symbol of a company synonymous with **quality, performance, safety, innovation and design.**

From the moment we created the first rubber sole for mountaineering, Vibram® has become a benchmark in the footwear market. Vibram® soles – derived from a desire to **boost safety and protection** – are known all over the world, and are the result of a constant commitment to research and development.

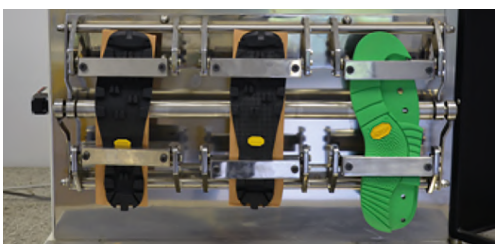


This stroke of genius led to the début of the first soles branded Vibram® – a combination of the inventor’s first name and surname – and the famous Carrarmato sole that revolutionised both mountaineering and the world of footwear, allowing for unprecedented performance in terms of **abrasion resistance, traction and grip.**

The Vibram® story began in 1936, when Vitale Bramani (an Academic of the Italian Alpine Club), on his return from a mountaineering ascent that ended in tragedy (1935), came up with the idea of making footwear soles using the same technique employed for making vehicle tyres.

VIBRAM® TESTS

Each and every Vibram sole must pass 3 levels of testing before it reaches the market. This series of tests ensures the **product quality meets and use requirements.**



LAB TESTS

The physical-mechanical characteristics of the soles are tested by machines. The objective is to measure the resistance of the sole sole to slips, abrasion, elasticity, hardness and density.



IN VIVO TESTS

- Indoor testing on shoes equipped with Vibram® flat soles.
- Tests performed by technicians according to a specific protocol.

The objective is to measure the performance of the gum to rubber.



FIELD TEST

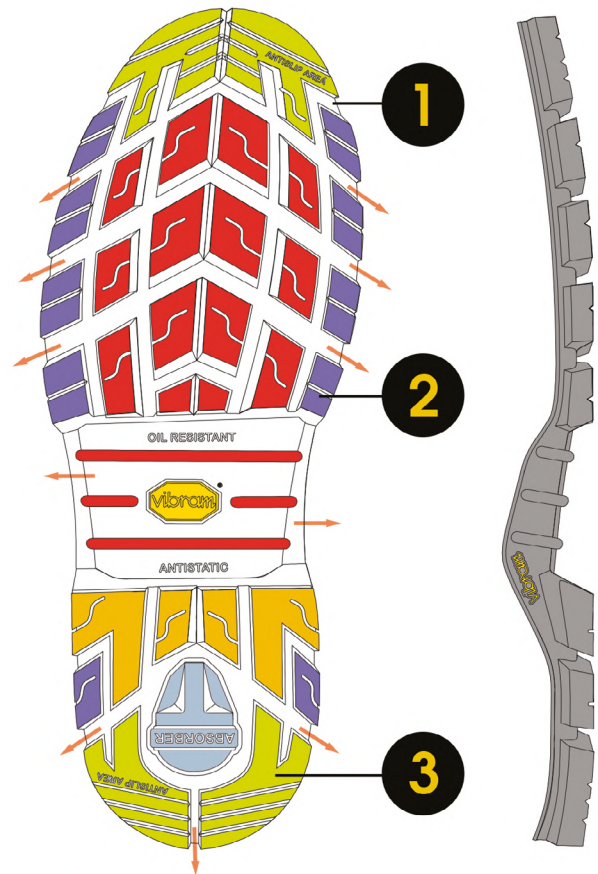
- Indoor Testing on shoes with flat sole design.
 - Run on shoes by humans with scientific protocols ("in vivo")
- Test samples : flat design soles to focus on compound performance Output : trustable compounds comparison.

The secret of Vibram® performance lies in the perfect combination of the **hyperfunctional DESIGN** of the soles and the use of **exclusive RUBBER varieties**.



TRUCKER

1194



■ GRIP
 ■ TRACTION
 ■ BRAKING
 ■ STABILITY
 ■ CUSHIONING
 ➔ SELF-CLEANING



- Engineered for use in a wide range of work and safety environments
- Provides a high level of grip and durability
- Excellent heat and tear resistance

BEST FOR



DESIGN & TECHNOLOGY

- 1 Large contact area for grip on industrial contaminated floors
- 2 Reinforced cleats for stability and durability
- 3 Oil draining channels to enhance grip and safety



0% METAL

JALROCHE S3 CI HI WR HRO SRC

CODE : 00JJV01

SIZE : 38 - 47



JALACER S3 CI HI WR HRO SRC

CODE : 00JJE23

SIZE : 38 - 47



0% METAL

3M **Thinsulate**
INSULATION



Waterproof and maximum grip

JALSIBERIEN S3 CI HI WR HRO SRC

CODE : 00JJV33

SIZE : 38 - 47



0% METAL

QuickLio™

JALTERRE METAL FREE S3 CI HI WR HRO SRC

CODE : 00JJV45

SIZE : 38 - 47



JALTERRE S3 CI HI WR HRO SRC

CODE : 00JJV31

SIZE : 38 - 47

- Upper Pure full-grain leather
- Lining GORE-TEX® Membrane
- Toe cap Springtane B
- Insole Soft
- Anti-puncture insert Flexthane
- Sole Vibram®



PULL-UP



PLEINE FLEUR





**ANKLE
PROTECTOR**



JALIROK S3 CI HI AN HRO SRC

CODE : 00JJE17

SIZE : 38 - 47



JALSALIX S3 CI HI HRO SRC

CODE : 00JJE16

SIZE : 38 - 47



JALBOX S3 CI HI HRO SRC

LINING : Isotermal

CODE : 00JJE19

SIZE : 38 - 47



JALHICKORY S3 CI HI HRO SRC

CODE : 00JJE15

SIZE : 38 - 47



JALKHAYA S3 CI HI HRO SRC

CODE : 00JJE18

SIZE : 38 - 47

| | |
|----------------------|--|
| Upper | Full-grain leather with Pull-up finish |
| Lining | 3D Surf mesh |
| Toe cap | Springtane B |
| Insole | Soft |
| Anti-puncture insert | Stainless steel |
| Sole | Vibram® |





JALARCHER S3 CI HI HRO SRC

UPPER : Full grain water resistant leather

LINING : 3D Imola mesh

ANTI-PUNCTURE INSERT : Flexthane

CODE : 00JJV28 SIZE : 38 - 47



JALORKA S3 CI HI AN HRO SRC

UPPER : Full grain water resistant leather

LINING : 3D Surf mesh

ANTI-PUNCTURE INSERT : Stainless steel

CODE : 00JJE58 SIZE : 38 - 47



JALDARK S3 CI HI HRO SRC

UPPER : Full grain water resistant leather

LINING : 3D Surf mesh

ANTI-PUNCTURE INSERT : Flexthane

CODE : 00JJE64 SIZE : 38 - 47

Toe cap Springtane B
 Insole Soft
 Sole Vibram®





Jallatte

vibram



JALTEX S3 CI WR SRC

UPPER : Full-grain leather with Pull-up finish

LINING : Membrane GORE-TEX®

CODE : 00JJV53

SIZE : 38 - 47



JALEBENE S3 CI SRC

UPPER : Full grain water resistant leather

CODE : 00JJE65

SIZE : 38 - 47



JALWENGÉ S3 CI SRC

UPPER : Full grain water resistant leather

CODE : 00JJE70

SIZE : 38 - 47



JALWILLOW ESD S3 CI SRC

UPPER : Full-grain leather with Pull-up finish

CODE : 00JJE63

SIZE : 38 - 47



Excellent leather impermeability no water penetration after 7h of testing

- Lining 3D Surf mesh
- Toe cap Springtane B
- Insole Soft
- Anti-puncture insert Flexthane
- Sole Softane Bi-density





**ANKLE
PROTECTOR**

JALFIR S3 CI AN SRC

CODE : 00JJE41

SIZE : 38 - 47



JALBEECH S3 CI SRC

CODE : 00JJE44

SIZE : 38 - 47



JALCYPRESS S3 CI SRC

LINING : Isotermol

CODE : 00JJE45

SIZE : 38 - 47



JALSEQUOIA S3 CI SRC

CODE : 00JJE42

SIZE : 38 - 47



JALOAK S3 CI SRC

CODE : 00JJE40

SIZE : 38 - 47

- Upper Full-grain leather with
- Lining Pull-up finish
- Toe cap 3D Surf mesh
- Insole Springtane B
- Anti-puncture insert Soft
- Sole Stainless steel
Softane Bi-density





JALPOLE S3 CI WR SRC

LINING : GORE-TEX® Membrane
ANTI-PUNCTURE INSERT : Stainless steel
CODE : 00JJS11 SIZE : 37 - 48



0%
METAL

JALFRIGG S3 CI SRC

LINING : Isotermal
CODE : 00J0652 SIZE : 35 - 48



0%
METAL

JALHAKA S3 SRC

CODE : 00J0650 SIZE : 35 - 48



0%
METAL

JALOSBERN S3 SRC

CODE : 00J0662 SIZE : 35 - 48



- Upper Natural full grain leather
AP23™, Water and oil repellent
- Toe cap Springtane B
- Insole Soft
- Anti-puncture insert Flextane
- Sole Softane Bi-density





JALOSBERN STEEL S3 SRC

INSOLE : Soft

CODE : 00JJB21

SIZE : 35 - 48



JALOSBERN WINTER STEEL S3 CI SRC

LINING : Isotermal

INSOLE : Soft

CODE : 00JJB22

SIZE : 35 - 48



JALBORG STEEL S3 CI HI SRC

LINING : 3D Surf mesh

INSOLE : Soft + Gel

CODE : 00J0701

SIZE : 35 - 48

MAXIMUM SAFETY
FOR ALL 3 MODELS :

Flextane HP
Inox Steel

Double anti-puncture :
Flextane + Stainless steel

Upper Natural full grain leather
AP23™, Water and oil repellent

Toe cap Springtane B

Anti-puncture insert Flextane and Stainless steel

Sole Softane Bi-density



Springtane B





PLEINE FLEUR

Full-grain leather AP23™, exclusive to Jallatte, **100% natural**, it is **water** and **oil repellent**.

Compared to the majority of leathers used in safety footwear, it has an increased thickness of between 10% and 15% (2.4 mm), which ensures excellent durability.

In addition, its **water-repellent potential** far exceeds the one required by European standards (12 hours of water repellency).



JALASKA S3 SRC

UPPER : Natural full grain leather AP23™,
Water and oil repellent
LINING : Nonwoven fabric
CODE : 00J0266 SIZE : 36 - 48



JALARTIC S3 CI SRC

UPPER : Natural full grain leather AP23™,
Water and oil repellent
LINING : Isotermal
CODE : 00J0257 SIZE : 36 - 48



JALMONT EVOL SAS S3 FO SR

UPPER : Water-repellent full-grain leather
with grained finish
LINING : Synthetic
CODE : 00J0255 SIZE : 36 - 48



SPECIFIC
CEMENT

JALMONT BETON EVOL SAS S3 FO SR

UPPER : Full-grain leather, resistant to active
cement agents
LINING : 3D Surf mesh
CODE : 00J0254 SIZE : 36 - 48



JALMATCH S1P SRC

UPPER : Smooth perforated suede leather
LINING : 3D Imola mesh
CODE : 00J0351 SIZE : 36 - 47



- Toe cap Steel Aérfort 200J
- Insole Confort Tech
- Anti-puncture insert Stainless steel
- Sole Softane Bi-density





JALEREC S3 SRC

UPPER : Full-grain leather with Pull-up finish
 CODE : 00JMJ07 SIZE : 35 - 47



JALGERAINT S3 SRC

UPPER : Full grain water resistant leather
 CODE : 00JMJ06 SIZE : 35 - 47



JALGAHERIS S3 SRC

UPPER : Full grain water resistant leather
 CODE : 00JMJ04 SIZE : 38 - 47



Ces modèles sont certifiés DGUV 112-191 ce qui permet de substituer la première de propreté fournie par une première orthopédique SECOSOL®

- Lining 3D Imola mesh
- Toe cap Springtane 200J
- Insole Soft
- Anti-puncture insert Flexthane
- Sole Softane Bi-density



PLEINE FLEUR

Springtane B



0% METAL





SPECIALS

The safety footwear in the **SPECIALS** collection uses technologies that **ensure optimum protection** for users, **extend product life** and **improve comfort** while preserving foot health.

These **3 new models** have been specifically **developed for high-risk jobs in heavy industry**, steelmaking and industrial maintenance, as well as for metalworkers, boilermakers and locksmiths.





JALMAGMA S3 CI HI HRO WG SRC

CODE : JYJY506 SIZE : 38 - 48



JALPLASMA S3 CI HI HRO WG SRC

CODE : JYJY505 SIZE : 38 - 48



JALTIG S3 CI HI HRO WG SRC

SOLE : Triftane X Vibram®

INSOLE : Soft+Gel

CODE : JXJX912 SIZE : 35 - 48



The **Vibram® sole** offers a high level of grip and durability as well as excellent resistance to heat and tears.

The **WG* Standard** guarantees that the upper can withstand small molten metal splashes.

**Test conducted according to the requirements of standard EN ISO 20349-2:2017 + A1:2020*



- Upper Full-grain leather with Pull-up finish
- Lining 3D Surf mesh
- Toe cap PremAlu B
- Insole Soft
- Anti-puncture insert Flexthane
- Sole Triple density PU / BASF® Infinergy® E-TPU with high energy return / Vibram®





NO-LACE FASTENING
For optimum support and stability

JALELITE

S3 CI HI HRO SRC

Code : JYJY507

Size : 35-48



FITTING AID



LEATHER BELLOWS
Prevents particle intrusion

REFLECTIVE SIDE INSERT
For good visibility at night

PU RUN-UP FRONT
For greater durability of the product



INFINERGY® INSERT
+55% energy restitution



UPPER
Water-repellent full-grain leather Pull-Up finish



INSOLE
For better weight distribution



VIBRAM® SOLE
Contact heat resistance (300°) and abrasion resistance



THE



- + Ideal for security, rescue and surveillance units
- + Excellent grip and durability thanks to Vibram® sole
- + Prevents the risk of falls and eliminates compression points thanks to the BOA® Fit System closure system
- + Saves 1 hour of energy per day to stay toned
- + Ideal for reducing fatigue in heavy walkers
- + Reduces the risk of lower-limb RSI



JALMARS S3 HRO SRC

UPPER : Pure full-grain leather

LINING : 3D Imola mesh

ANTI-PUNCTURE INSERT : Stainless steel

CODE : 00J0246 SIZE : 36 - 47



JALSCAND S3 HRO SRC

UPPER : Pure full-grain leather

LINING : 3D Imola mesh

ANTI-PUNCTURE INSERT : Stainless steel

CODE : 00J0248 SIZE : 36 - 47



SPECIFIC
COATED



JALTARMAC S3 HI HRO SRC

UPPER : Full grain water resistant leather

LINING : Leather

ANTI-PUNCTURE INSERT : Stainless steel and

Isoltane

CODE : 00J0250 SIZE : 38 - 47



ASEPTANE

JALBIO S2 HRO SRC

UPPER : Aseptane, waterproof and breathable

LINING : Fabric

CODE : 00J0271 SIZE : 35 - 47

Toe cap Steel Aérfort 200J
Insole Confort Tech
Sole Triftane™ Vibram®





Soltane
by Fallato

The first collection of energy-saving safety footwear

J-PRO is 20347 compliant (without safety toecap) but goes far beyond the standard requirements set out by the standard, as all styles in the collection incorporate additional **A**, **E**, **WRU**, **FO**, **SRC** and **ESD** requirements.



Antistatic electrical resistance



Energy absorption at heel



Water repellent upper



Resistance of sole to hydrocarbons



SRC Slip resistance



ESD



More than 55% in terms of energy stored during walking **exceptional cushioning** and a guaranteed **anti-fatigue effect**.

Xtensible™

Xtensible™ non-tied elastic laces with adjustable Stop-Lace lock :

- * Eliminates the feeling of having swollen feet
- * Allows them to be put on and taken off rapidly
- * Reduces the risk of falling



Speed, safety, comfort and **hygiene** at the service of the workers.



LIGHT



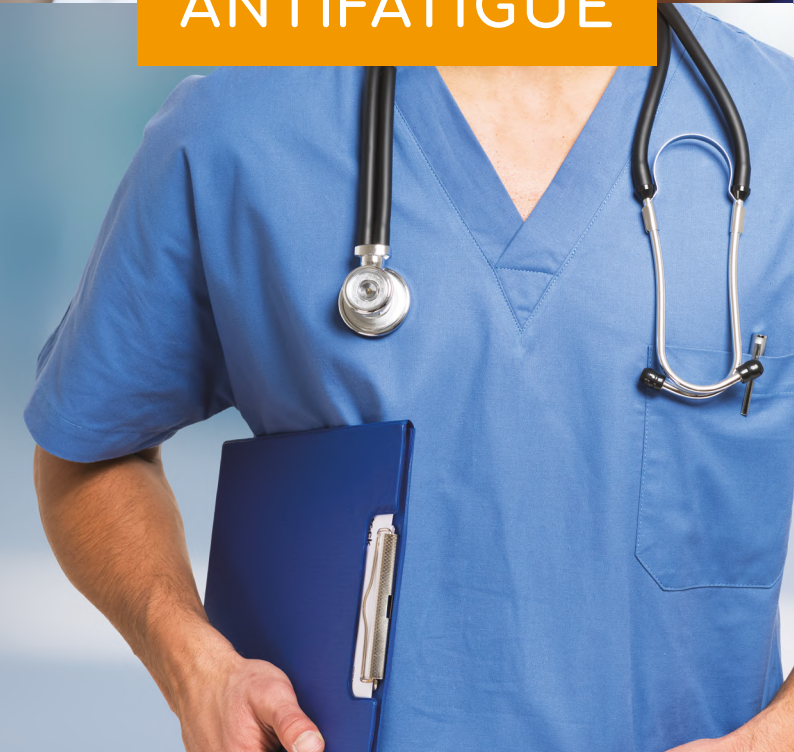
FLEXIBLE



ANTIFATIGUE



ANTI-SLIP





JALSALT ESD O2 FO SRC

LINING : 3D Roma mesh

CODE : JOJO205 SIZE : 35 - 48



JALLABO ESD O2 FO SRC

UPPER : Breathable and waterproof microfiber

LINING : 3D Roma mesh

CODE : JOJO213 SIZE : 35 - 48



JALNIGEL ESD O2 FO SRC

LINING : 3D Surf mesh

CODE : JOJO212 SIZE : 35 - 48



JALPEPPER ESD O2 FO SRC

LINING : 3D Surf mesh

CODE : JOJO204 SIZE : 35 - 48



SAKINA ESD O2 FO SRC

LINING : 3D Surf mesh

CODE : JOJO201 Size : 35 - 42

- Upper PUTEK® PLUS highly resistant to abrasion, water resistant and breathable
- Insole Soft + Gel
- Sole Triple density with high energy return PU2D/E-TPU Infinergy® from BASF®



Link-ESD



SOFT+GEL





JALBOSS ESD O2 FO SRC

UPPER : PUTEK® PLUS highly resistant to abrasion, water resistant and breathable

LINING : 3D Surf mesh

CODE : JOJO210 SIZE : 38 - 48



JALDEREK ESD OB A E WRU FO SRC

LINING : 3D Surf mesh

CODE : JOJO208 SIZE : 35 - 48



MEREDITH ESD OB A E WRU FO SRC

LINING : 3D Surf mesh

CODE : JOJO206 SIZE : 35 - 42



MIRANDA ESD OB A E WRU FO SRC

LINING : Maille 3D Imola

CODE : JOJO207 SIZE : 35 - 42



Upper Microfiber Aseptane
Insole Soft + Gel
Sole Triple density with high energy return PU2D/E-TPU Infinergy® from BASF®

Link-ESD

ASEPTANE



SOFT+GEL



FOOTBED

SOFT



SOFT

SIZE : 35 - 48

CODE : JS 00002

SOFT+GEL

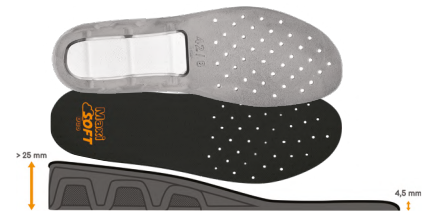


SOFT + GEL

SIZE : 35 - 48

CODE : JS 00003

Maxi SOFT Duo



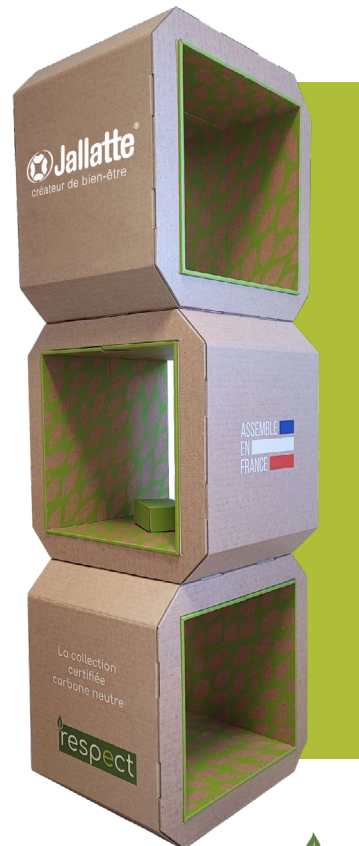
MAXI SOFT DUO*

SIZE : 35 - 48

CODE : JS 00004

**Only for the models J-INDUSTRY and J-INDUSTRY labelled RESPECT*

J'RESPECT FURNITURE



3 MODULE CARDBOARD PODIUM

MEASUREMENTS : L46 x H138 cm

CODE : ES00141

J-EXPO FURNITURE

New Jallatte® ecological & sustainable furniture



Assembly quick & easy



PODIUM DUO MOBILE

HIGH MOBILE

MEASUREMENTS : L58,2 x H105,7 x B40 cm
CODE : ES00118

LOW MOBILE

MEASUREMENTS : L58,2 x H65,2 x B40 cm
CODE : ES00117



4 FOOT DISPLAY STAND

MEASUREMENTS : L40 x H178,1 x B37,5 cm
CODE : ES00115



SHELVING WITH WHEELS

MEASUREMENTS : L111,4 x H198,1 x B37,7 cm
CODE : ES00116

UPPER



Water-repellent full-grain leather



Velvety-appearance leather that is **soft** and **breathable**



Suede leather, **soft** and **excellent breathability**



Water-repellent full-grain leather with a pull-up finish. **Very waterproof**



AP23™ leather, exclusive Jallatte, **100% natural**, it is **water** and **oil repellent**. 10% to 15% thicker than most of the leathers used for safety footwear (2,4mm), ensuring excellent durability. Moreover, its properties of **resistance to penetration of water** vapor exceed the minimum values required by the European standard



Water-repellent full-grain leather with pull-up finish. **Excellent waterproofing** of the leather, not even a drop of water after 7 hours of testing.



Putek® plus Technology uses newly developed **high resistance abrasion** yarns, woven directly into the fabric, to obtain high-tenacity and high-performance abrasion resistant fabrics.

These highly **resistant and water-repellent** fabrics allow the creation of **ultralight and ultra-breathable** S3 products



- Special fiber that thanks to a specific finish features unique qualities :
- Exceptional **impermeability and breathability**
- Resistance to **washing** (even at 30 °)
- Incredible **ease of cleaning and maintenance**



Technology consisting of a superstructure grid made of TPU and designed for an **enhanced support of the upper**. Promoting the "**seamless**" concept, it contributes to an increased durability of the shoes



Technical 100% polyester fabric, **highly abrasion resistant and ultra-breathable** for a long life and optimum comfort for the foot

LINING



A GORE-TEX® membrane is an **extremely thin** layer of expanded polytetrafluoroethylene (ePTFE). It contains more than 1.4 billion pores per cm². All these pores guarantee the properties of GORE-TEX® fabrics. It is only 0.01 mm thick. It is attached to a lining or a **high-performance outer fabric**, which results in a GORE-TEX® laminate.



Breathable thermal insulating lining designed to ensure the perfect balance inside the shoe in any condition the perfect equilibrium inside the footwear. It keeps you cool in summer and warm in winter.



3D mesh lining, that is technical, **innovative and anti-bacterial**, capable of combining **high performance breathability** and **abrasion resistance** with a feeling of softness and comfort. Its special 3-layer structure promotes thermoregulation to keep the foot dry and in complete comfort.



3D mesh lining, made using three-dimensional fabric and combined with a foam to ensure **protection and comfort**, in addition to an open structure (grille) **required for peripheral ventilation of the foot**.

The lining has a specially designed honeycomb structure and uses micro ventilation channels to ensure **high levels of breathability**. It is also **resistant to abrasion**, tearing and cutting.



3D mesh lining, with micro-ventilation technology, smooth appearance, 3-layer structure consisting of a textile mesh, foam and reinforcement grille. **High mechanical strength** (abrasion and tearing) and **rapid drying**.

TOE CAP



Steel toe cap resistant to 200 J. Perforated for **increased breathability**



Lightweight, non-magnetic 200J aluminium toe cap. While providing the same **strength**, it is **51% lighter than a steel toe cap**. More **resistant to impact and possible compression**, the B toe cap meets the higher requirements of the new EN ISO 22568-4:2020 standard (new requirements and test methods for footwear components).



Synthetic polymer toe cap, resistant to 200 J, **non-magnetic** and **non-thermal**. **Memory foam** toe cap, it returns to its original shape in the event of crushing, thus facilitating the release of the foot. More **resistant to impact and possible compression**, the B toe cap meets the higher requirements of the new EN ISO 22568-4:2020 standard (new requirements and test methods for footwear components).

INSOLE

SOFT



SOFT insole made using BASF® dynamic polyurethane with **memory foam**, that is **heat-sensitive** and active over the entire surface of the foot.

It is right beneath the soles of the feet that SOFT **improves weight distribution** by cushioning pressure points and allowing **positive energy to be returned**.

SOFT+GEL



Bi-material comfort insole : SOFT+GEL consisting of :

- a SOFT insert made using BASF® Dynamic polyurethane with memory foam, which is **heat-sensitive** and active over the entire surface of the foot.

It is right beneath the soles of the feet that SOFT **improves weight distribution** by cushioning pressure points and allowing **positive energy to be returned**.

- a two-zone GEL insert with **high cushioning capability** at the heel and anatomical extension beneath the midfoot.

Its design allows for **improved heel shock cushioning** while still providing **excellent sole support**.

Maxi SOFT Duo



This **removable** insole is made of 2 materials :

- A 'SOFT' BASF® dynamic polyurethane layer including memory foam, which is heat-sensitive and active over the entire surface of the foot.

Under the soles of the feet, SOFT **improves weight distribution** by reducing pressure points and the feeling of discomfort.

- An integrated 'MAXI'-size anti-fatigue insert made of BASF® Elastopan, an elastomer that is used in anti-fatigue mats.

Positioned beneath the base layer, this MAXI insert **cushions and alleviates stress on the body**, which is forced to stand upright for many hours a day, both while in motion and while walking, thus **reducing the risk of MSDs** (musculoskeletal disorders) in the lower limbs.



Lined with an **anti-bacterial, breathable fabric**, and reinforced in the heel area for improved **shock absorption**.

- Anatomical
- Antistatic
- Removable
- Covers 100% of the foot surface

ANTI-PUNCTURE INSERT



Extra soft textile inlay made of **high-strength** fabric :

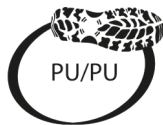
- Strength 1.100N
- Non-magnetic
- Athermic
- Complies with EN ISO 22568-4:2020 standards
- Covers 100% of the foot surface



Anti-perforation midsole in stainless steel :

- Strength 1.100 N
- Maximum protection

SOLE



J-nude 2 J-INDUSTRY

PU/PU

BASF® PU/PU sole with a **sporty, urban sport** featuring a linear profile and **excellent slip-resistance**.



J-ENERGY

Triple density PU / E-TPU Infinergy® by BASF® / Vibram®.

This triple-density outsole is ideal for those who travel frequently or over long distances every day. Its combination with Vibram® ensures greater durability and better slip resistance.



J-ENERGY

PU2D/E-TPU Infinergy of BASF®

Designed with an innovative material used in the **world of running**, this **triple density sole** ensures dynamic performance in 3 phases : **shock absorption, energy storage and dynamic return**. They are ideal for all those who are subject to frequent movements and who travel long distances daily.



J-HOP!

PU/PU Extra-Rebound 41,5% by BASF®

With over **40% energy resistance** over the entire surface, both in the support phase and in the thrust phase, this PU/PU Extra-Rebound 41,5% by BASF® sole brings **lightness, wellness and comfort, reducing the feeling of tiredness** both in an upright position and in prolonged activity situations.



TAPIS ROUGE

PU2D/Elastopan by BASF®

This triple density sole made with a revolutionary elastomer used for the production of **antifatigue** mats distributes the plantar pressures; it is able to **absorb and relieve body stress by reducing the traumas** associated with a prolonged static working position. Ensures high performance in terms of comfort, balance and shock distribution.



TRIFTANEX 

TRIFTANE X is equipped with a **new Vibram® sole**, which guarantees more **durability** and **better resistance to slipping** and on **hot surfaces**.



J-ESCAPE SPECIALS

Decades of **experience** and **excellence** in sport and mountaineering at the service of the working world today. The Vibram® rubber sole is suitable for every situation, light but **extremely resistant** and performing even in **extreme conditions**.



Softane **Softane** **Softane** **Softane**
Tradition Avant-Garde Prestige Adventure

The special **bi-density polyurethane** SOFTANE is designed to achieve the perfect balance between **comfort, lightness and durability**. The midsole is developed with a density such as to ensure flexibility and absorption of vibrations and impacts with the ground, while the outsole is designed to **resist to abrasion, hydrocarbons, oils and grease**.



TRIFTANE
Excellence



The Vibram® Triftane sole made from high-performance rubber guarantees better mechanical resistance to abrasion, detachment and tears. It brings a higher level of grip to reduce the risk of slipping, but also better protection against hot floors (HRO certification/resistance to hot contact up to 300°C).

VARIOUS



BOA® Fit System is a rapid, easy and accurate lacing system with no need for laces. **Eliminates the risk of falls** and untying laces.



Xtensible™ non-tied elastic laces with adjustable Stop-Lace lock :

- * Eliminates the feeling of having swollen feet
- * Allows them to be put on and taken off rapidly
- * **Reducing risk of fall**

Speed, safety, comfort and hygiene at the service of the workers



QuickLio™ Technical "2 in 1" lace loop: holds laces in place for **quick lacing** and **untie**.



TPU cushioned insert positioned on the ankle area enabling the **full protection of the ankle bones** against possible side impacts. Conforms to the additional standards (AN) of EN ISO 20345:2011.

Innovative "multi-contact" system on the insole for **dissipating electrostatic charge**.



Thanks to LINK-ESD™, you will feel, step by step, as if you were connected to the ground thanks to a device certified according to the EN 61340-4-3 and EN 61340-5-1 standards, which ensures the **total absence of risks associated with possible electrical discharges harmful** to electronic and computer equipment.

Internal orthopaedic insole approved for safety footwear in accordance with DGUV 112-191 on the use of foot and knee protection.

DGUV 112-191 certification allows the replacement of the insole supplied by Jallatte with a SECOSOL® orthopaedic insole manufactured by Hartmann Matthias Orthopädie und Sport GmbH laboratories in Dillenburg, Germany.



Patented technology



Patent application filed

| MODEL | STANDARD REQUIREMENTS | CODE | PAGE |
|----------------|-----------------------|---------|------|
| INES ESD | S1P SRC | JYJY211 | 26 |
| JALACER | S3 CI HI WR HRO SRC | 00JJE23 | 56 |
| JALACTIVE ESD | S1P CI SRC | JYJY102 | 24 |
| JALADRIA ESD | S1P SRC | JHJH304 | 31 ● |
| JALAERO ESD | S3 CI SRC | JVJV201 | 46 |
| JALALTA ESD | S3 CI SRC | JYJY495 | 52 |
| JALANGO ESD | S3 CI SRC | JYJY497 | 52 |
| JALARCHER | S3 CI HI HRO SRC | 00JJV28 | 58 |
| JALARTEMIS | S1P HRO SRC | JXJX902 | 33 ● |
| JALARTIC | S3 CI SRC | 00J0257 | 65 |
| JALASKA | S3 SRC | 00J0266 | 65 |
| JALATHLON ESD | S3 SRC | 00JN107 | 43 ● |
| JALAUBIER ESD | S3 CI HI SRC | JYJY464 | 12 |
| JALBARAD | S3 CI HI SRC | JYJY222 | 53 |
| JALBASALT ESD | S3 CI SRC | JIJ1534 | 11 |
| JALBEECH | S3 CI SRC | 00JJE44 | 61 |
| JALBIO | S2 HRO SRC | 00J0271 | 72 |
| JALBOMBER ESD | S3 CI SRC | JYJY498 | 20 |
| JALBORG STEEL | S3 CI HI SRC | 00J0701 | 63 |
| JALBOSS ESD | 02 FO SRC | JOJ0210 | 77 |
| JALBOX | S3 CI HI HRO SRC | 00JJE19 | 57 |
| JALBUMPER ESD | S3 CI SRC | JIJ1174 | 41 |
| JALCALCIUM ESD | S2 SRC | JIJ1282 | 40 |
| JALCARBO ESD | S3 SRC | JYJY217 | 25 |
| JALCATCH ESD | S1P SRC | 00JN126 | 43 ● |
| JALCERES ESD | S1P SRC | JHJH301 | 31 ● |
| JALCLIMATE | S3 CI WR SRC | JYJY137 | 22 |
| JALCLOUD ESD | S1P CI SRC | JIJ1134 | 39 |
| JALCROSS ESD | S3 SRC | 00JN120 | 43 |
| JALCYBER ESD | S3 CI HI SRC | JIJ1214 | 38 |
| JALCYPRESS | S3 CI SRC | 00JJE45 | 61 |
| JALDAGOR | S3 CI SRC | JYJY225 | 53 |
| JALDARK | S3 CI HI HRO SRC | 00JJE64 | 58 |
| JALDATA ESD | S1P CI SRC | JIJ1234 | 39 |
| JALDENIRO | S1P SRC | JYJY501 | 21 |
| JALDEREK ESD | OB A E WRU FO SRC | JOJ0208 | 77 |
| JALDIDO ESD | S3 CI SRC | JHJH309 | 29 |
| JALDOJO ESD | S3 SRC | 00JN101 | 42 |
| JALDYNAM ESD | S3 CI SRC | JYJY103 | 22 |
| JALEBENE | S3 CI SRC | 00JJE65 | 60 |
| JALECO ESD | S3 CI SRC | JIJ1434 | 10 |
| JALELEC ESD | S1P CI HI SRC | JIJ1156 | 39 |
| JALELITE | S3 CI HI HRO SRC | JYJY507 | 68 |
| JALEREC | S3 SRC | 00JMJ07 | 66 |
| JALEVA ESD | S3 CI SRC | JHJH307 | 30 |
| JALFARO | S3 CI SRC | JYJY224 | 53 |
| JALFIR | S3 CI AN SRC | 00JJE41 | 61 |
| JALFLASH ESD | S3S CI FO SR | JYJY189 | 20 |

| MODEL | STANDARD REQUIREMENTS | CODE | PAGE |
|--------------------|-----------------------|---------|------|
| JALFOREST ESD | S3 CI SRC | JYJY454 | 13 |
| JALFRIGG | S3 CI SRC | 00J0652 | 62 |
| JALFUTURE ESD | S3 CI SRC | JIJ1414 | 10 |
| JALGABBRO ESD | S2 FO SR | JIJ1522 | 11 |
| JALGAHERIS | S3 SRC | 00JMJ04 | 66 |
| JALGALLIA ESD | S1P SRC | JHJH404 | 31 ● |
| JALGAND | S3 CI WR SRC | JYJY231 | 51 |
| JALGEAR ESD | S3 CI SRC | JYJY232 | 23 |
| JALGEAR-TR ESD | S3 CI SRC | JTJT705 | 35 ● |
| JALGERAINT | S3 SRC | 00JMJ06 | 66 |
| JALGRAPHITE ESD | S2 SRC | JIJ1272 | 40 |
| JALGROVE ESD | S3 CI SRC | JYJY444 | 13 |
| JALHAKA | S3 SRC | 00J0650 | 62 |
| JALHICKORY | S3 CI HI HRO SRC | 00JJE15 | 57 |
| JALHIPPO ESD | S3 CI SRC | JHJH406 | 30 |
| JALHYBRIS ESD | S3 CI SRC | JHJH408 | 29 |
| JALHYDRO ESD | S3 CI SRC | JYJY484 | 12 |
| JALHYGIE ESD | S3 SRC | JYJY216 | 25 |
| JALHYRA | S3 CI HRO SRC | JXJX907 | 33 |
| JALIDA ESD | S1P SRC | JHJH302 | 31 ● |
| JALINO | S3 CI HRO SRC | JXJX006 | 33 |
| JALIROK | S3 CI HI AN HRO SRC | 00JJE17 | 57 |
| JALJAB ESD | S3 SRC | 00JN119 | 43 |
| JALJUNO ESD | S3 CI SRC | JHJH306 | 30 |
| JALKALLISTO ESD | S3 CI SRC | JHJH409 | 29 |
| JALKANBAN ESD | S1P CI SRC | JIJ1166 | 39 |
| JALKHAYA | S3 CI HI HRO SRC | 00JJE18 | 57 |
| JALKOHAI ESD | S3 SRC | 00JN128 | 42 ● |
| JALLABO ESD | 02 FO SRC | JOJ0213 | 76 |
| JALLADY ESD | S3 CI SRC | JVJV204 | 47 |
| JALLEAN ESD | S1P CI SRC | JIJ1266 | 39 |
| JALLIBER ESD | S3 CI SRC | JYJY474 | 12 |
| JALMAGMA | S3 CI HI HRO WG SRC | JYJY506 | 69 |
| JALMARS | S3 HRO SRC | 00J0246 | 72 |
| JALMATCH | S1P SRC | 00J0351 | 65 |
| JALMECA ESD | S1P CI HI SRC | JIJ1256 | 39 |
| JALMETIS ESD | S3 CI SRC | JHJH308 | 29 |
| JALMONT EVOL SAS | S3 FO SR | 00J0255 | 65 |
| JALMONT BETON EVOL | S3 FO SR | 00J0254 | 65 |
| JALMUDO | S3 CI SRC | JYJY223 | 53 |
| JALNANO ESD | S3 CI SRC | JIJ1224 | 38 |
| JALNATION ESD | S3 CI SRC | JVJV203 | 46 |
| JALNATURE ESD | S3 CI SRC | JIJ1424 | 10 |
| JALNIGEL ESD | 02 FO SRC | JOJ0212 | 76 |
| JALNORA ESD | S3 CI SRC | JYJY252 | 51 |
| JAL02 ESD | S1P CI SRC | JIJ1446 | 10 |
| JALOAK | S3 CI SRC | 00JJE40 | 61 |
| JALONYX ESD | S3 CI SRC | JIJ1544 | 11 |

| MODEL | STANDARD REQUIREMENTS | CODE | PAGE |
|------------------------|-----------------------|---------|------|
| JALORKA | S3 CI HI AN HRO SRC | 00JJE58 | 58 |
| JALOSBERN | S3 SRC | 00J0662 | 62 |
| JALOSBERN STEEL | S3 SRC | 00JJB21 | 63 |
| JALOSBERN WINTER STEEL | S3 CI SRC | 00JJB22 | 63 |
| JALOXY ESD | S1P CI SRC | JJJI556 | 11 |
| JALPACINO | S3 CI SRC | JYJY500 | 21 |
| JALPATRIOT ESD | S3 CI SRC | JVJV103 | 46 |
| JALPEPPER ESD | 02 FO SRC | JOJ0204 | 76 |
| JALPEPS ESD | S1P CI SRC | JYJY201 | 24 |
| JALPERFECT ESD | S3 CI SRC | JYJY251 | 20 |
| JALPLASMA | S3 CI HI HRO WG SRC | JYJY505 | 69 |
| JALPLUME ESD | S1P CI SRC | JVJV205 | 47 |
| JALPOLE | S3 CI WR SRC | 00JJS11 | 62 |
| JALPOLYXO | S3 CI HRO SRC | JXJX906 | 33 |
| JALPROCESS ESD | S3 CI HI SRC | JJJI114 | 38 |
| JALPULSE ESD | S3 CI SRC | JYJY104 | 22 |
| JALPULSE-TR ESD | S3 CI SRC | JTJT803 | 35 |
| JALPUNCH ESD | S1P CI SRC | JYJY101 | 24 |
| JALPURE ESD | S3 CI SRC | JYJY250 | 20 ● |
| JALPYTHON ESD | S3 CI SRC | JJJI244 | 38 |
| JALQUARTZ ESD | S2 FO SR | JJJI512 | 11 |
| JALREI ESD | S3 SRC | 00JN129 | 42 |
| JALRIVER ESD | S3 CI SRC | JYJY494 | 12 |
| JALROADSTER | S3 CI HI HRO SRC | JJJI194 | 41 |
| JALROCHE | S3 CI HI WR HRO SRC | 00JJV01 | 56 |
| JALRUN ESD | S1P CI SRC | JYJY202 | 24 |
| JALRUN-TR ESD | S1P SRC | JTJT701 | 35 ● |
| JALSALIX | S3 CI HI HRO SRC | 00JJE16 | 57 |
| JALSALT ESD | 02 FO SRC | JO205 | 74 |
| JALSCAND | S3 HRO SRC | 00J0248 | 72 |
| JALSEQUOIA | S3 CI SRC | 00JJE42 | 61 |
| JALSIBERIEN | S3 CI HI WR HRO SRC | 00JJV33 | 56 |
| JALSKIN ESD | S3 CI SRC | JYJY234 | 23 |
| JALSOLID ESD | S3 CI SRC | JYJY134 | 23 |
| JALSPACE ESD | S3 CI SRC | JVJV101 | 46 |
| JALSPRING ESD | S3 CI SRC | JYJY203 | 22 |
| JALSTAR ESD | S3S CI FO SR | JYJY289 | 20 |
| JALSTRATO ESD | S3 CI SRC | JVJV206 | 46 |
| JALTAĪ ESD | S3 SRC | 00JN103 | 42 |
| JALTAIL ESD | S3 CI SRC | JVJV102 | 47 |
| JALTANO ESD | S3 CI SRC | JYJY496 | 52 |
| JALTARAK | S3 CI HI AN SRC | JYJY226 | 53 |
| JALTARMAC | S3 HI HRO SRC | 00J0250 | 72 |
| JALTEA | S3 CI HRO SRC | JXJX007 | 33 ● |
| JALTECHNO ESD | S3 CI SRC | JJJI124 | 38 |
| JALTERRE | S3 CI HI WR HRO SRC | 00JJV31 | 56 |
| JALTERRE METAL FREE | S3 CI HI WR HRO SRC | 00JJV45 | 56 |
| JALTEX | S3 CI WR SRC | 00JJV53 | 60 |

| MODEL | STANDARD REQUIREMENTS | CODE | PAGE |
|-----------------|-----------------------|---------|------|
| JALTHIA ESD | S1P SRC | JHJH402 | 31 ● |
| JALTIG | S3 CI HI HRO WG SRC | JXJX912 | 69 |
| JALTONIC ESD | S3 CI SRC | JYJY204 | 22 |
| JALTONIC-TR ESD | S3 CI SRC | JTJT703 | 35 |
| JALTOUNDRAS ESD | S3 CI SRC | JVJV207 | 14 |
| JALTRAILER ESD | S3 CI SRC | JJJI184 | 41 |
| JALTREE ESD | S3 CI SRC | JYJY434 | 13 |
| JALTRUCK ESD | S3 CI SRC | JJJI284 | 41 |
| JALTURBO ESD | S3 CI SRC | JYJY132 | 23 |
| JALTURBO-TR ESD | S3 CI SRC | JTJT805 | 35 ● |
| JALURANIA ESD | S3 CI SRC | JHJH407 | 30 |
| JALVISTA | S3 CI WR SRC | JYJY253 | 51 ● |
| JALVIVO ESD | S3 CI SRC | JJJI447 | 10 |
| JALWAVE ESD | S3 CI SRC | JYJY499 | 20 |
| JALWENGE | S3 CI SRC | 00JJE70 | 60 |
| JALWILLOW ESD | S3 CI SRC | 00JJE63 | 60 |
| JALWING ESD | S3 CI SRC | JVJV202 | 47 |
| LAIA ESD | S1P CI SRC | JYJY212 | 26 |
| MEREDITH ESD | OB A E WRU FO SRC | JOJ0206 | 77 |
| MIKY ESD | S3 CI SRC | JYJY109 | 26 |
| MIRANDA ESD | OB A E WRU FO SRC | JOJ0207 | 77 |
| NOA ESD | S3 CI SRC | JYJY209 | 26 |
| SAKINA ESD | 02 FO SRC | JOJ0201 | 76 |

● DISCONTINUED ITEM



Despite a revision of EN ISO 20345 in 2022, EN ISO 20345:2011 is still valid for new certification until November 11, 2024. Therefore, all certificates issued up to this date will be valid for 5 years, i.e. until November 11, 2029. During this transition period, the two versions of the standards will coexist. In our next 2024 catalog, we'll be unveiling all aspects of these new standards requirements, the new CE markings markings and their impact on the technological and safety choices of our collections.

| CATEGORIES | | FUNDAMENTAL REQUIREMENTS | | ADDITIONAL REQUIREMENTS | SYMBOLS |
|-------------------------------------|-------------------|--------------------------|-----------------|--|------------------|
| EN ISO 20345:2011 Toe 200 J/15kN | EN ISO 20347:2012 | Class I (shoe) | Class II (boot) | | |
| SB | | ● | ● | | |
| S1 | | ● | | Closed heel area Antistatic properties Energy absorption in the heel | A E |
| | 01 | ● | | Resistance of the sole to hydrocarbons | FO |
| S2 | 02 | ● | | Same as S1/01 plus: resistance to water penetration | E/FO WRU |
| S3 | 03 | ● | | same as S2/02 plus: resistance to perforation. Cleated soles | A/E/WRU/ FO/P |

| ADDITIONAL SYMBOLS USED | | REQUIRED MINIMUM VALUES EN ISO 20345:2011 + EN ISO 20347:2012 |
|---|-----------|---|
| Resistance to perforation | P | ≥ 1100 Newton |
| Electric resistance: - Antistatic - Conductive | A C | between 1x10 ⁵ Ω a 1x10 ⁹ Ω < 1x10 ⁹ Ω |
| Resistant to harsh environments : - Cold isolation - Heat isolation | CI HI | by temperature < 10°C by temperature > 22°C |
| Resistance of the sole against contact heat | HRO | contact at 300°C for 60 secs – no melting |
| Resistance of the sole Against hydrocarbons | FO | always present by EN ISO 20345:2011 and by EN ISO 20346:2011 but to be specified when required by EN ISO 20347:2012 |
| Energy absorption capacity in the heel area | E | ≥ 20 Joule |
| Resistance of the whole shoe to water penetration | WR | no penetration within first 15 mins. After 100 flex should not penetrate more than 3 square Cm |
| Resistance of the upper to water penetration | WRU | > 60 mins - Absorbance < 30% |
| Ankle protection | AN | average value > 20kN |
| Shoe with metatarsal protection | M | height after shock > 40 mm (tg 42) |
| Cut resistant upper | CR | I factor > 2,5 |
| Features spiked soles | NO SYMBOL | Stud height >=2,5 cm |

Slip resistance of the sole Regulation: EN ISO 20345:2011 / 20347:2012

| Marking symbol | Required conditions provided by the regulation |
|--|--|
| SRA Test surface: ceramics Lubricant: water and detergent | ≥ 0.32 flat footwear ≥ 0.28 footwear inclined 7° towards the heel |
| SRB Test surface: stainless steel lubricant: Glycerin | ≥ 0.18 flat footwear ≥ 0.13 footwear inclined 7° towards the heel |
| SRC | Both above described conditions required |

Personal Safety Equipments (P.P.E.) are ruled by two European regulations:

- the 89/686 CE which defines the obligations of the producer
- the 89/656 CE relating to the use, which defines the obligations of the companies and the workers.

Safety, protectional and professional footwear are identified as Personal Safety Equipments

OBLIGATIONS OF THE PRODUCER

By purchasing Jallatte® products you are assured that all footwear have met the certification procedures based on the European regulations, as shown by the CE marking. Each box contains an informative note of use which establishes the risks covered. For every model, Jallatte® issues a declaration of conformity.

OBLIGATIONS OF THE COMPANIES AND THE WORKERS

besides the priority of collective protection, the directive establishes an obligation of health and safety. The employers must:

- locate the risks which cannot be avoided through collective protection

- select the P.P.E. suitable and appropriate to the risks, in consultation with the R.S.P.P.
- select the P.P.E. compatible with the types of work to be executed and with the principles of ergonomics
- make the P.P.E. available to the workers
- monitor actual usage
- provide the P.P.E. for free and for personal use
- ensure the proper functioning, the hygienic status and maintenance
- proceed or o carry out periodical general checks for some categories of P.P.E.
- ensure information, education, instruction, training of the use of P.P.E. And the risks covered
- prepare a delivery note of the P.P.E. For the worker

And further:

- the P.P.E. are not to be considered prizes in kind
- the responsibility of the worker is only disciplinary (omission to wear the protections) and is subordinated to a criminal matter responsibility of the employer

THE CERTIFICATION PROCEDURES

All Jallatte® footwear belongs to class II (protection against severe risks). Therefore all footwear is submitted to the specific CE examination at an enabled body at a European level'.

Basing on the analyses and the executed tests for this type in conformity to the regulation EN ISO 20344:2011, on the technical documentation and the informative note of use, a CE attestation is released, valid in whole Europe.

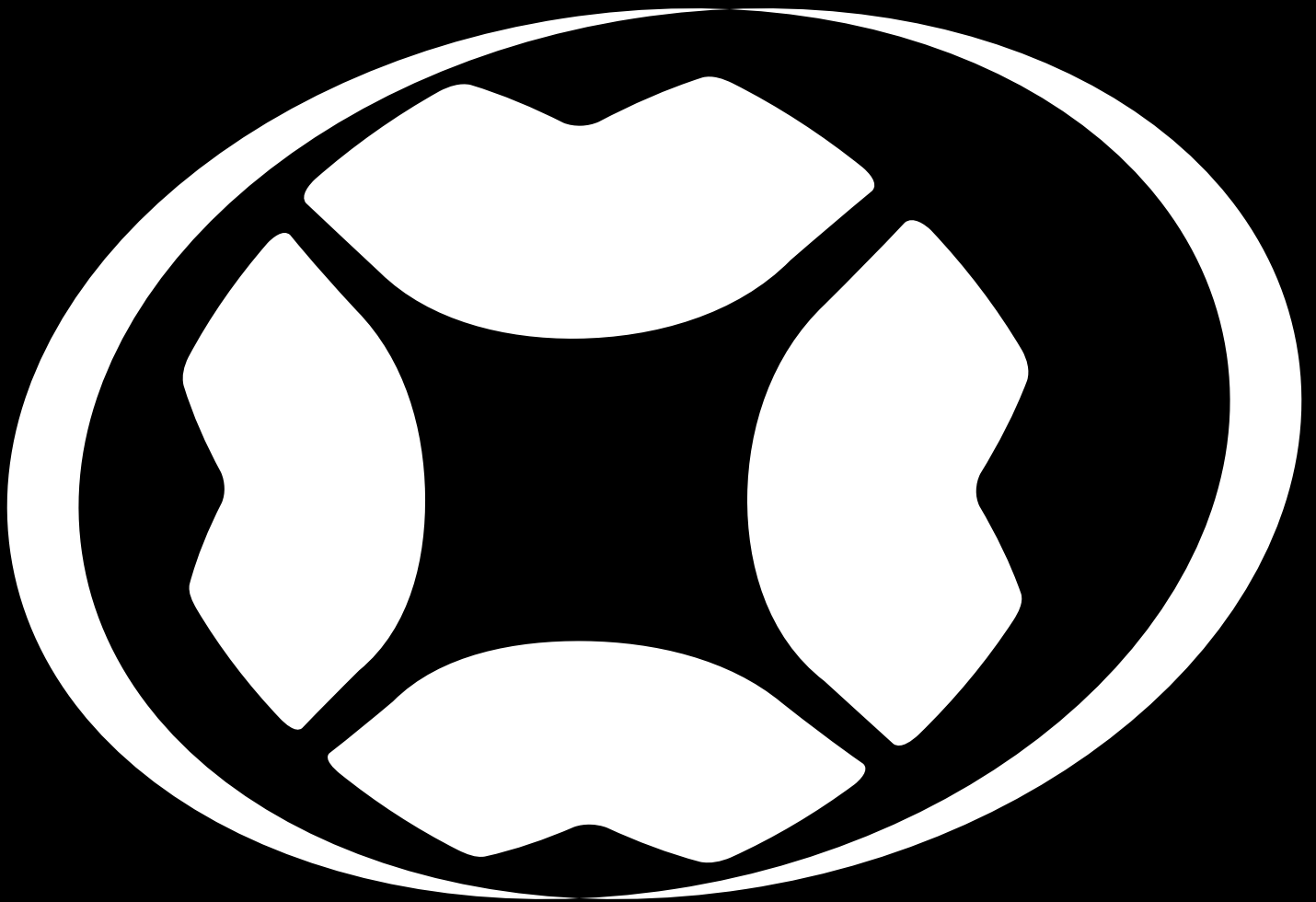
Notes

It is forbidden to affix on a P.P.E., on it's box and on any other pertinent document any brand or writing susceptible to create confusion with the markings provided within the framework of the certification procedures in conformity with Art. R233.50.1

This catalogue replaces all previous documents.

With the aim to improve our collections, all products included in this catalogue may be replaced and/or modified.

Images are for illustration purposes only and are not legally binding.



5, RUE DE FORT - PIERRE J ALLATTE

30170 SAINT HIPPOLYTE DU FORT - FRANCE

Tel. +33 (0)4 66 80 63 00 - Fax +33 (0)4 66 80 63 03

commercial@jallatte.fr

VIA BORGOMANERO 50

28040 PARUZZARO | NO | ITALY

Tel. +39 0322 53 94 50 - Fax +39 0322 23 00 01

info@aimont.com



www.jallatte.com

MAY 2024 EDITION



 **Jallatte**[®]
créateur de bien-être

